
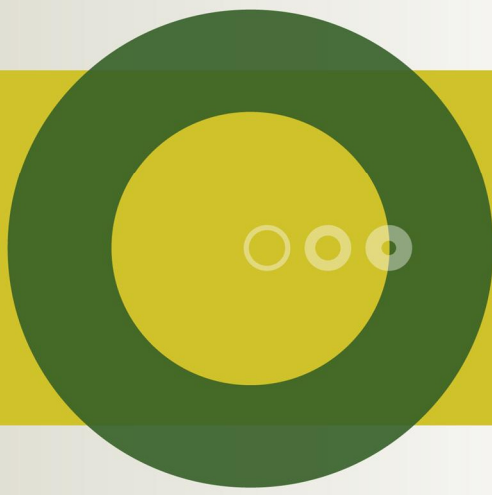

KNOWLEDGE CENTRE FOR AGRICULTURE


FarmTracking - context aware tracking and alerts using wearables

Jens Peter Hansen, Jens Bligaard & Mike Jørgensen

Knowledge Centre of Agriculture

PARTNER IN
DLBR
DANISH AGRICULTURAL ADVISORY SERVICE


KNOWLEDGE CENTRE FOR AGRICULTURE

FORSIDE ERFAGRUPPER FORUM EKSPERTBLOGS OM ERFALAND SPONSORSEKTION REDIGER PROFIL

EMNE: Kortlægning


Kortlægning 24. jul 2012 18:20 #2674

Sv: Kortlægning 25. jul 2012 21:19 #2678

Sv: Kortlægning 26. jul 2012 07:39 #2679

Sv: Kortlægning 27. jul 2012 16:29 #2680

Sv: Kortlægning -> husk steder ved brug af apps 02. Aug 2012 13:14 #2697



jenspeterhansen

Indlæg: 14

På LandbrugsInfo kan du læse en beskrivelse af en håndfuld apps til android og apps til iPhone, der kan hjælpe med at holde styr på hvad jeg kalder stedsfæstet information som f.eks. pletter med flyvehavre, speciel ukrudt, jordfaste sten, manglende isåning osv.

Afhængig af temperaturer, vind, skyer osv. kan det være svært at kunne optage en indtalt båndoptagelse for såvel...


Såvel Pin Drop (IP) udveksling af data m. synkronisering til hjemmesiden, hvor data kan bearbejdes yderligere og nye punkter (f.eks. arbejdsopgaver) kan oprettes. Ifølge hjemmesiden er de på vej med Pin Drop til android.

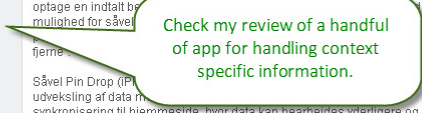
Like 0

REDIGER Rapport til moderator

CITER SVAR

KVÆGPRODUKTION


Testning af GPS-areamærker og droner
AGROMEK AND NJF JOINT SEMINAR 24-25 NOVEMBER 2014
Future arable farming and agricultural engineering

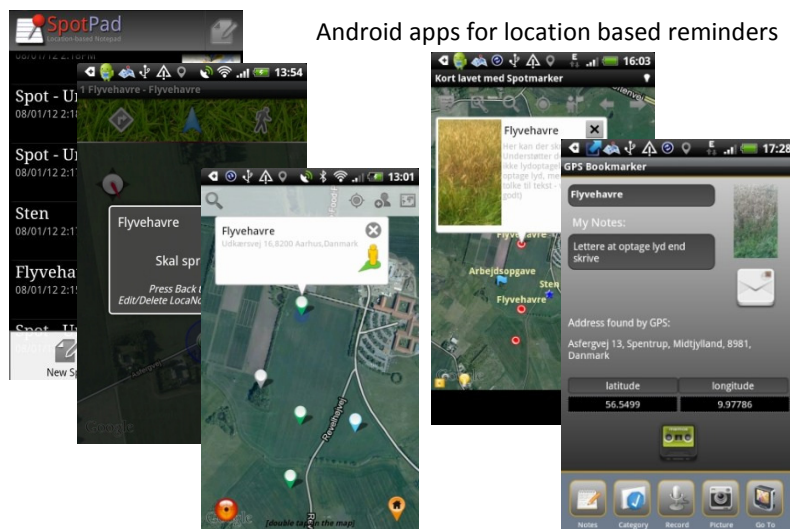


Check my review of a handful of app for handling context specific information.



KNOWLEDGE CENTRE FOR AGRICULTURE

Android apps for location based reminders

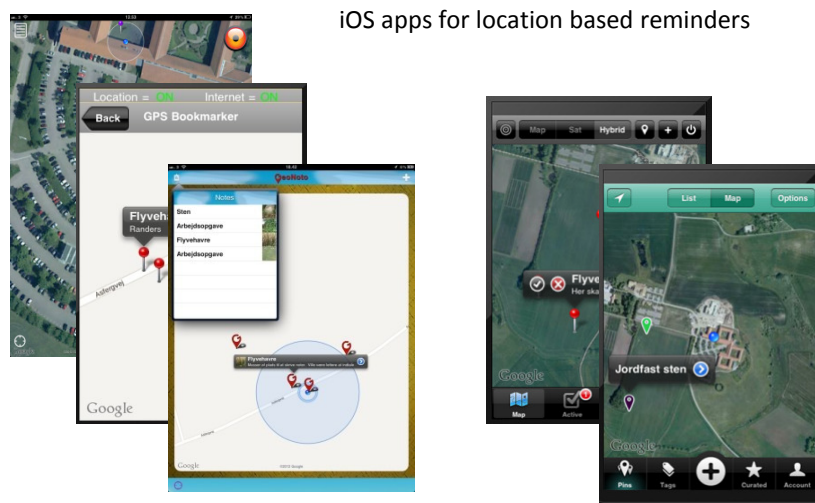


AGROMEK AND NIF JOINT SEMINAR 24-25 NOVEMBER 2014
Future arable farming and agricultural engineering



KNOWLEDGE CENTRE FOR AGRICULTURE

iOS apps for location based reminders

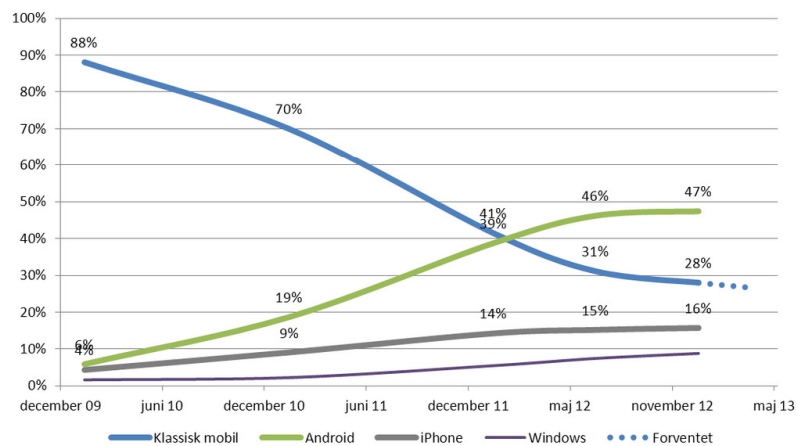


AGROMEK AND NIF JOINT SEMINAR 24-25 NOVEMBER 2014
Future arable farming and agricultural engineering



KNOWLEDGE CENTRE FOR AGRICULTURE

Which mobile do Danish farmers buy?



AGROMEK AND NJF JOINT SEMINAR 24-25 NOVEMBER 2014

Future arable farming and agricultural engineering



KNOWLEDGE CENTRE FOR AGRICULTURE



Indtast din idé

Hotte **Populære idéer** Nye Min feedback

102 idéer
Læg info på markkort
En app, hvor du kan lægge informationer på dit markkort som billeder, tekst, tale/video. Ukrudts bestande, vandløb, dræn er blot nogle af de oplysninger du hurtigt og nemt kan påføre dit markkort, direkte fra marken. Informationer er naturligvis stedsfæstede.

2 kommentarer · Set... · Adresser...

80 idéer
Mark online
Det ville være rigtig fint, hvis der blev skabt nogle ressourcer på at lægge mark-online om fra Windows til de nye smartphones.

2 kommentarer · Adresser...

67 idéer
dyreregistrering/ kvikko til Android

2 kommentarer · Adresser...

59 idéer
Logbog for gylletanke
Apsurfering af logbog for gylletanke ved brug af app på smartphonen. Kan udnytte lokalisering (GPS) til at starte på nærmeste gylletank inkl. alarm når logføring er nødvendig.

Ved "aktiviteter" kan logbogen færes, mens en arbejdsoperation udføres - f.eks. fyldning af gyllevogn, omrøring, overpumpning.

0 kommentarer · Set... · Adresser...

28 idéer
Varslinger fra Registreringsnettet

Visning af informationer fra Registreringsnettet, idet vi udsætter GPS til at centrere kommission omkring landmandens ejendom. Indgangsbilledet kunne være rød-gul-røde felter med navn på sygdom eller skadevolder. Når gylle kort eller graf. En mere avanceret udgave kan senere vise de for landmanden relevante afgræder ifølge oplysninger fra Dansk Markdatabase.

omrøring, overpumpning.

Jens Peter Hansen · Få det rigtige ind i
Indstillinger · Administrationskonsole · Log ud

Få din gratis feedback forum & support widget

1 idéer tilføjet

Apps til landmandens smartphone

Indsend en ny idé...

Alle idéer

Search

Videncentret for landbrug

AGROMEK AND NJF JOINT SEMINAR 24-25 NOVEMBER 2014

Future arable farming and agricultural engineering



Survey – most requested functionalities

- Marking of the location of drainage pipes (70 %)
- Marking of the location of weed patches (60 %)
- Retrieval of field specific cropping or cultivation plan (52 %)
- Early warnings about diseases and bugs in crops (45 %)
- Legal restrictions on a specific field (33 %)

n =178, 2013



A step further – generic requirements for alerts and tracking

- The user must be able to **save locations** on their mobile so that so that such locations later on can be used as trigger points for notifications.
- It must be possible for the user to **receive notifications** on his phone on the basis of location.
- Notifications are provided within a very short time, when the user approaches the location which can **trigger a notification**.
- The solution should be applied as widely as possible - i.e. for **all possible types of notifications** - also those who potentially may come in the future.
- The application must **dynamically adjust its querying** for notifications and alerts.

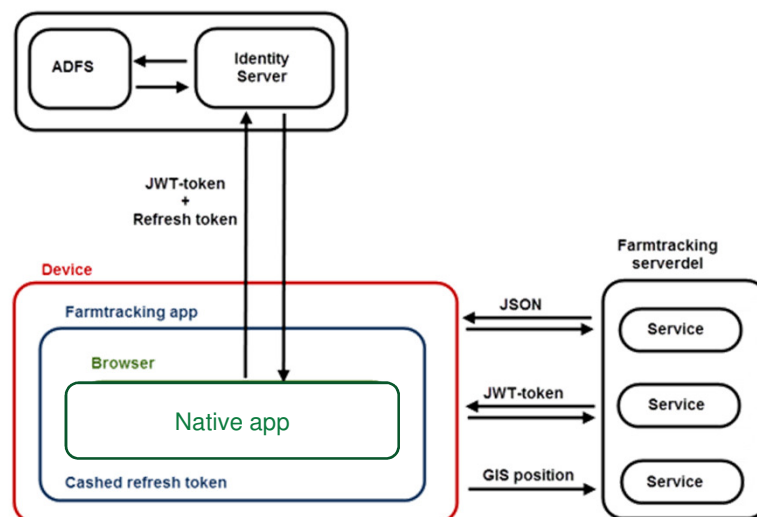


A step further – generic requirements for alerts and tracking

- The platform should allow for the user to **change the status** of a task to "Done".
- Notification must be given not only on the basis of point position, but also on the basis of whether the user is within a **certain area**.
- **Battery life** must to some extent be taken into consideration.
- The platform should be usable across **different wearable platforms**.
- **Off-line scenarios** are an issue which has to be handled.
- The **end user** must have a clear perception of what is monitored and why.
- The application should be **simple to use**.
- The user shall be able to **actively request** context relevant information

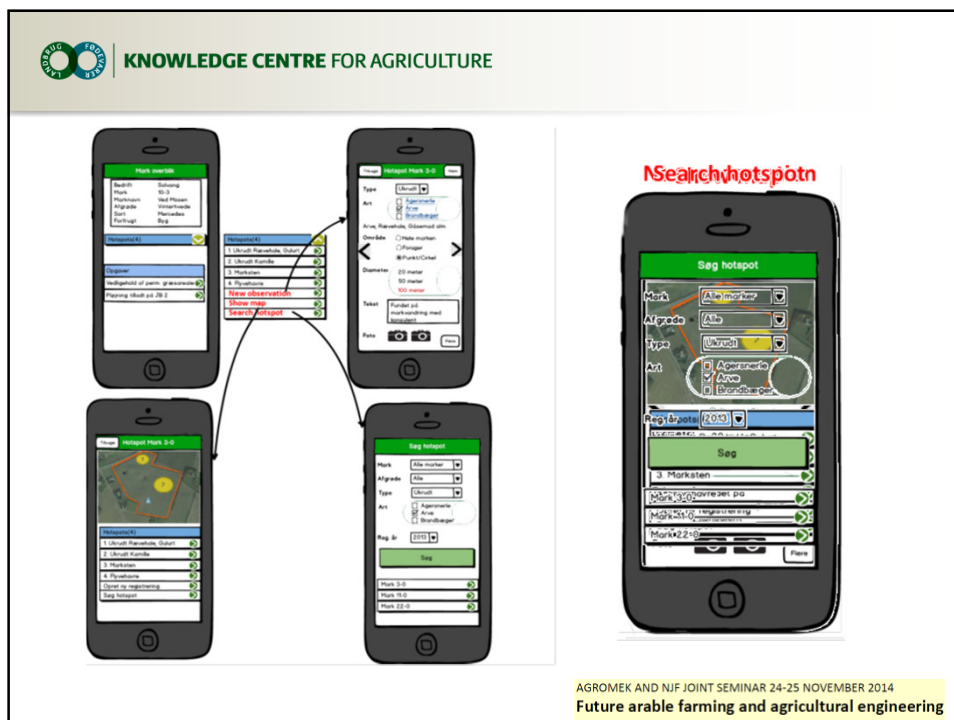
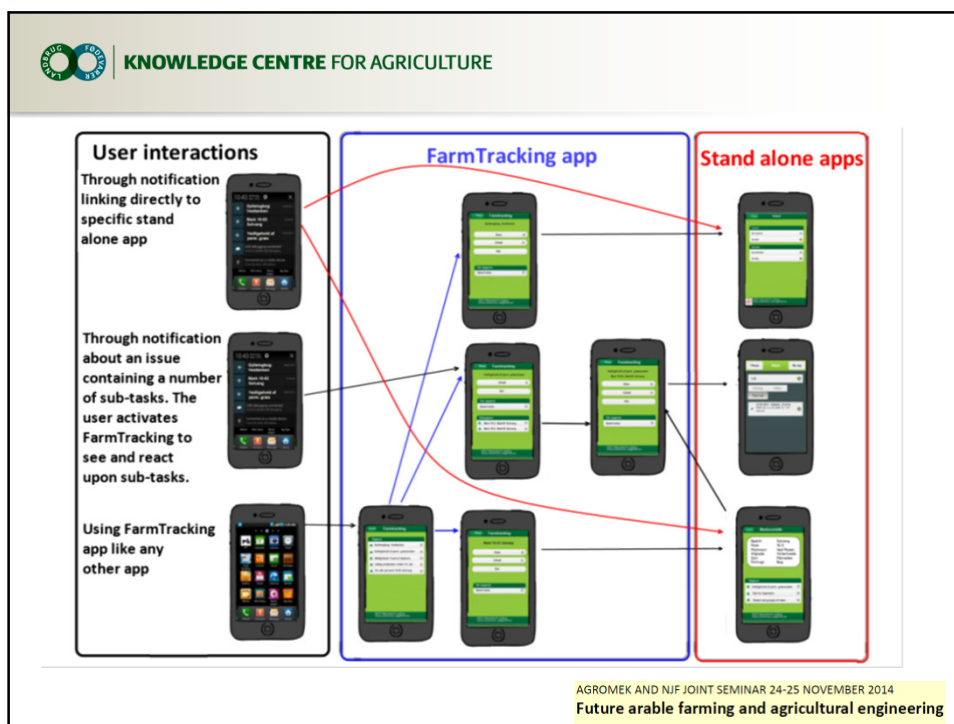
AGROMEK AND NIF JOINT SEMINAR 24-25 NOVEMBER 2014


Future arable farming and agricultural engineering

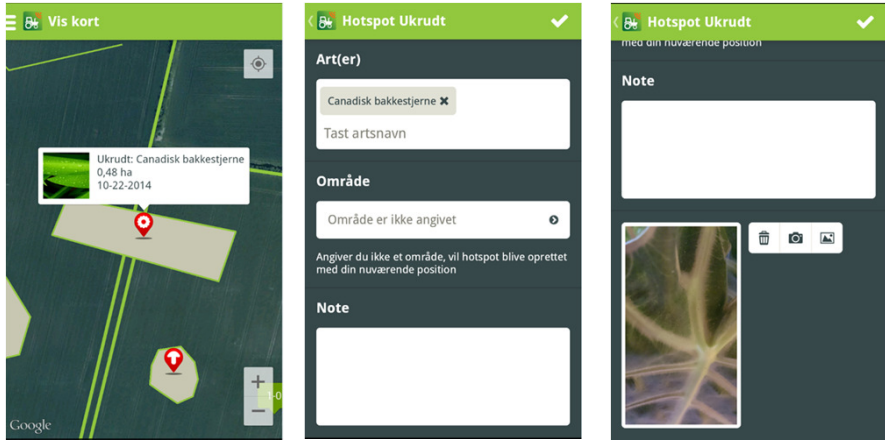


AGROMEK AND NIF JOINT SEMINAR 24-25 NOVEMBER 2014


Future arable farming and agricultural engineering



 **KNOWLEDGE CENTRE FOR AGRICULTURE**




AGROMEK AND NIF JOINT SEMINAR 24-25 NOVEMBER 2014
Future arable farming and agricultural engineering

 **KNOWLEDGE CENTRE FOR AGRICULTURE**

Use cases

- Wild oats alert
- Marking a stone
- Creating a drainage map
- Marginal Zone restrictions
- Weed spraying decision support
- Field specific legislation
- Rules for using sewage sludge
- Agri-environmental area
- Locate drain pipes
- Cross compliance issues
- Find the right field
- Follow-up on fertilizing plan
- Preventing theft
- Location-based instructions
- Spoken farm specific location based instructions

AGROMEK AND NIF JOINT SEMINAR 24-25 NOVEMBER 2014
Future arable farming and agricultural engineering

 **KNOWLEDGE CENTRE FOR AGRICULTURE**

FarmTracking

- Påmindelser 9 (20)
- Marker
- Nyt hotspot
- Vis kort
- Søg hotspot
- Vælg bedrift
- Opsætning
- Log ud

DLBR

Påmindelse

Vedligehold af perm. græsarealer

Beskrivelse

15. september skal permanente græsarealer og græsarealer i omdrift fremstå plejede jf. krydsoverensstemmelsesreglerne. Dette er en kontrol for, at du har husket at pleje alle dine permanente græsarealer, og du modtager denne information, da en eller flere af dine bedrifter i Dansk Mark Database har marker med permanent græs. Kontakt din planteavlskonsulent hvis du vil vide mere om reglerne.

Påmind mig senere ☐ Aldrig

Markér som læst ☐

Påmindelse

Vedligehold af perm. græsarealer

Beskrivelse

Påmind mig senere ☐ Aldrig

Markér som læst ☐

Berørte marker Mark OK

2-0 West	<input checked="" type="checkbox"/>
5-0 By the lake	<input type="checkbox"/>

AGROMEK AND NJF JOINT SEMINAR 24-25 NOVEMBER 2014
Future arable farming and agricultural engineering

 **KNOWLEDGE CENTRE FOR AGRICULTURE**

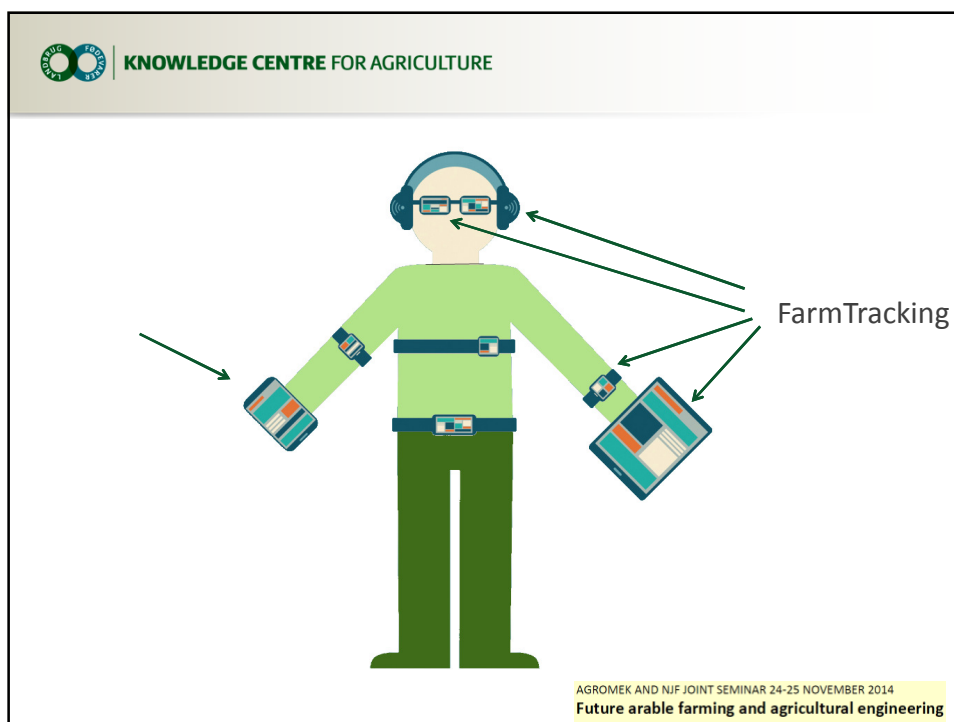
Farmers Glasses - a 2009 vision



Kvægdatabase Vejrdatabase Positions/kontekst database Driftsdatabase Kalendersystem

See 7 minutes presentation on <http://agrotech.dk/projekter/superman-har-roentgensyn-har-vi>

AGROMEK AND NJF JOINT SEMINAR 24-25 NOVEMBER 2014
Future arable farming and agricultural engineering





KNOWLEDGE CENTRE FOR AGRICULTURE

Google Now

Google serves up information before you even know you need it.

Google Now is one of the more ambitious evolutions of Google's search software. The idea is simple — predict what you'll want or need to know before you know you need or want it, and serve it up in an easy-to-read format. And the execution has been excellent.



KNOWLEDGE CENTRE FOR AGRICULTURE

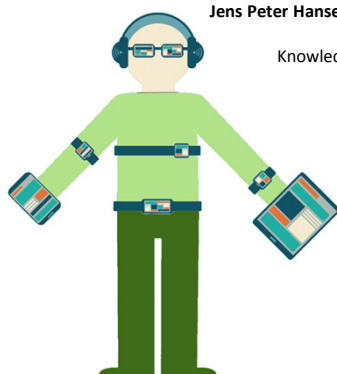
Thanks for your attention

FarmTracking – context aware tracking and alerts using wearables

Jens Peter Hansen, Jens Bligaard & Mike Jørgensen

Knowledge Center for Agriculture
Aarhus, Denmark

jph@vfl.dk



AGROMEK AND NJF JOINT SEMINAR 24-25 NOVEMBER 2014
Future arable farming and agricultural engineering